



**ROUSKI EVO RETRACTABLE WHEEL SYSTEM
INSTALLATION INSTRUCTIONS**

**ADAPTER PLATE
ON PILOT 5.7**

472208

INSTALLATION INSTRUCTIONS - 472208

ROUSKI EVO ADAPTER PLATE FOR PILOT 5.7 SKIS

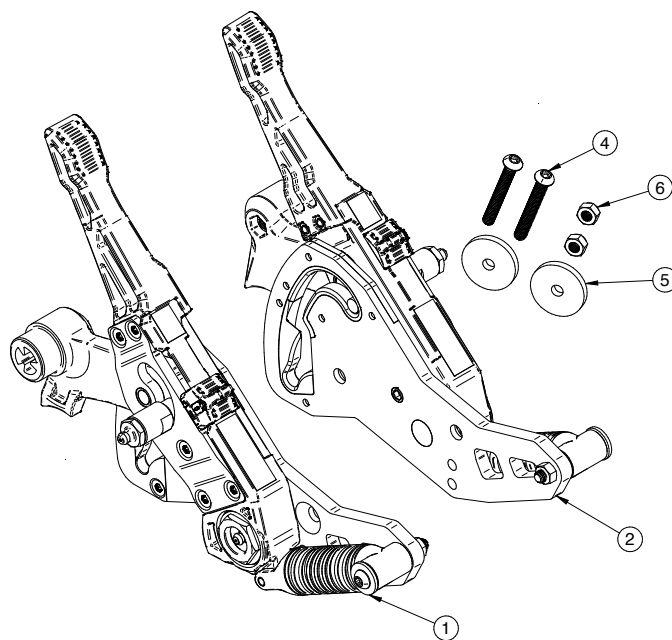
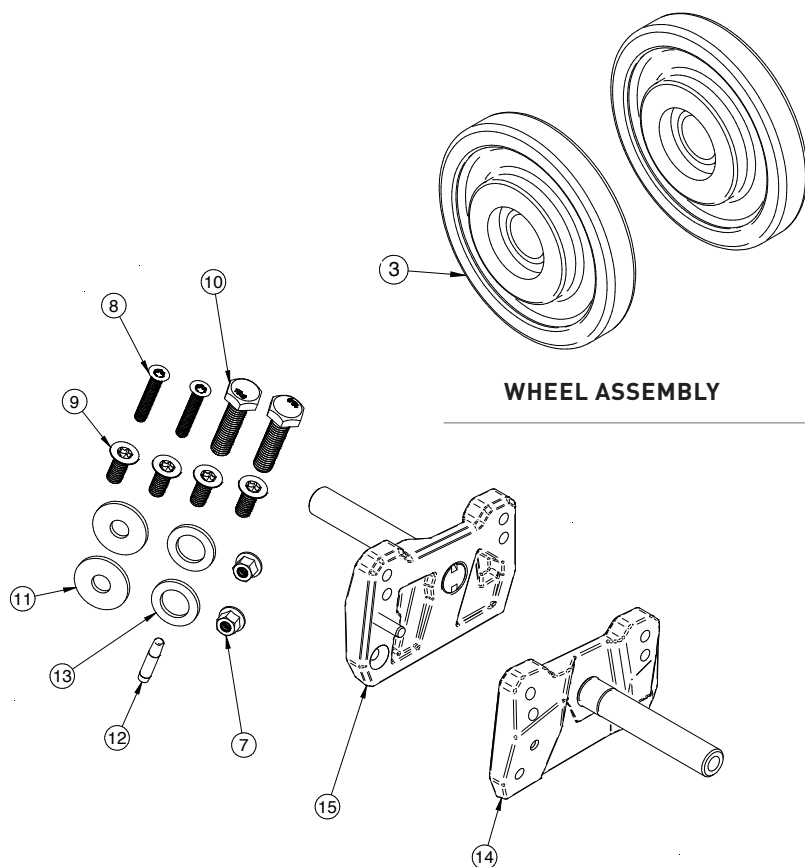
KIMPEX

KIT INCLUDES

NO.	PART	QTY	DESCRIPTION
Rouski EVO mechanism assembly (2x)			
1	472100	1	Rouski EVO Assy Right
2	472100	1	Rouski EVO Assy Left
4	472100	2	M6 X 1 X 45 Torx Button Head
5	472100	2	Wheel Washer
6	472100	2	M6 X 1 Nylon Insert Nut
Wheel assembly (2x)			
3	472298	2	ROUSK Wheel kit 136 mm
Pilot 5.7 Adapter assembly (2x)			
7	472208	2	M6 X 1 Nylon Insert Flange Nut
8	472208	2	M6 X 1 X 35 Torx Flat Head
9	472208	4	M8 X 1.25 X 20 Torx T40 Flat Head
10	472208	2	M10 X 1.5 X 40 Hex Head
11	472208	2	Oversized Washer For M10
12	472208	1	Loctite 243 Small Bottle
13	472208	2	Adaptor Internal Shim Pilot X
14	472208	1	Adaptor Plate Pre-Assy Right PILOT 5.7
15	472208	1	Adaptor Plate Pre-Assy Left PILOT 5.7

TOOLS REQUIRED:

DESCRIPTION
Hammer
Punch
Drill
1/4" drill bit
Torque wrench
Socket T30
Socket T40
16 mm socket
Low temp synthetic grease
Loctite blue 243 medium strength or equivalent



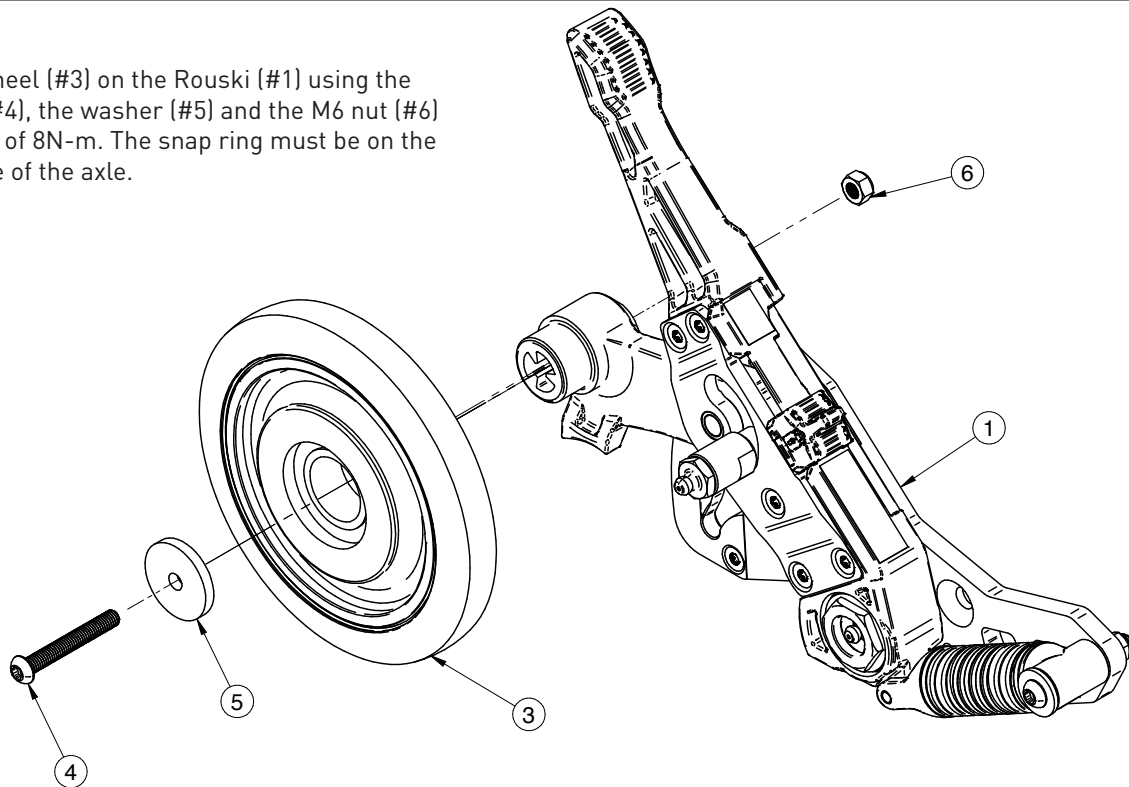
INSTALLATION INSTRUCTIONS - 472208

ROUSKI EVO ADAPTER PLATE FOR PILOT 5.7 SKIS



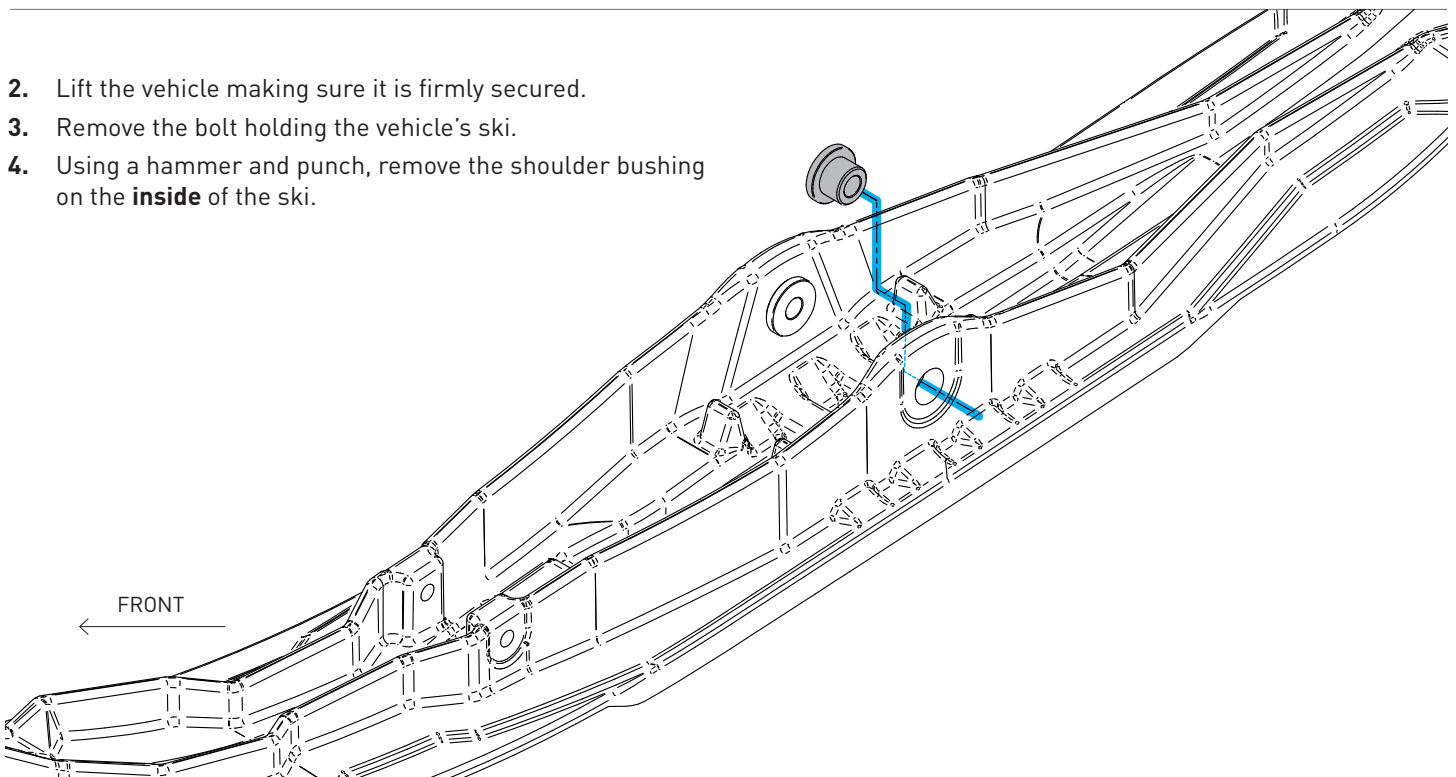
STEP - PREPARE THE MECHANISM

1. Attach the wheel (#3) on the Rouski (#1) using the M6x45 bolt (#4), the washer (#5) and the M6 nut (#6) with a torque of 8N-m. The snap ring must be on the shoulder side of the axle.



STEP - PREPARE THE SNOWMOBILE

2. Lift the vehicle making sure it is firmly secured.
3. Remove the bolt holding the vehicle's ski.
4. Using a hammer and punch, remove the shoulder bushing on the **inside** of the ski.



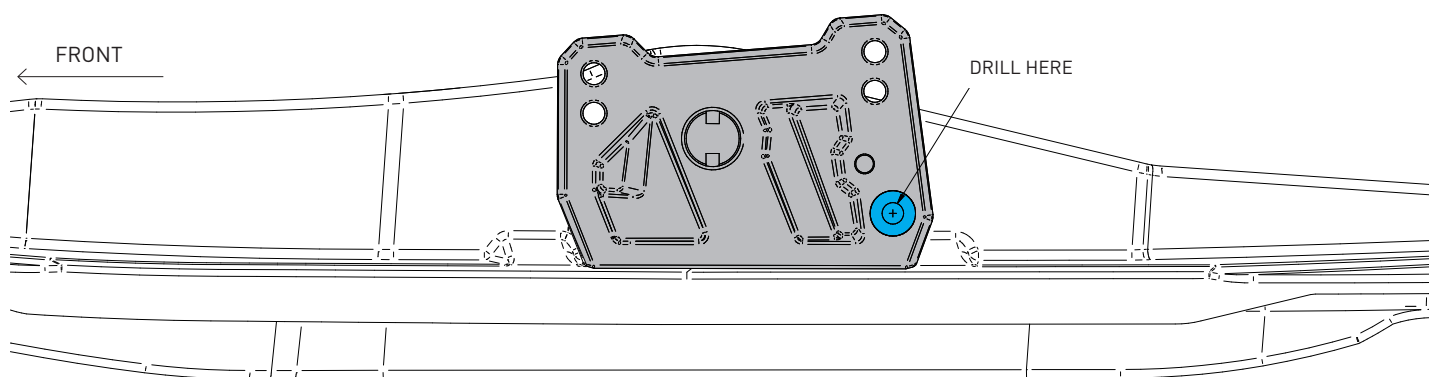
INSTALLATION INSTRUCTIONS - 472208

ROUSKI EVO ADAPTER PLATE FOR PILOT 5.7 SKIS

KIMPEX

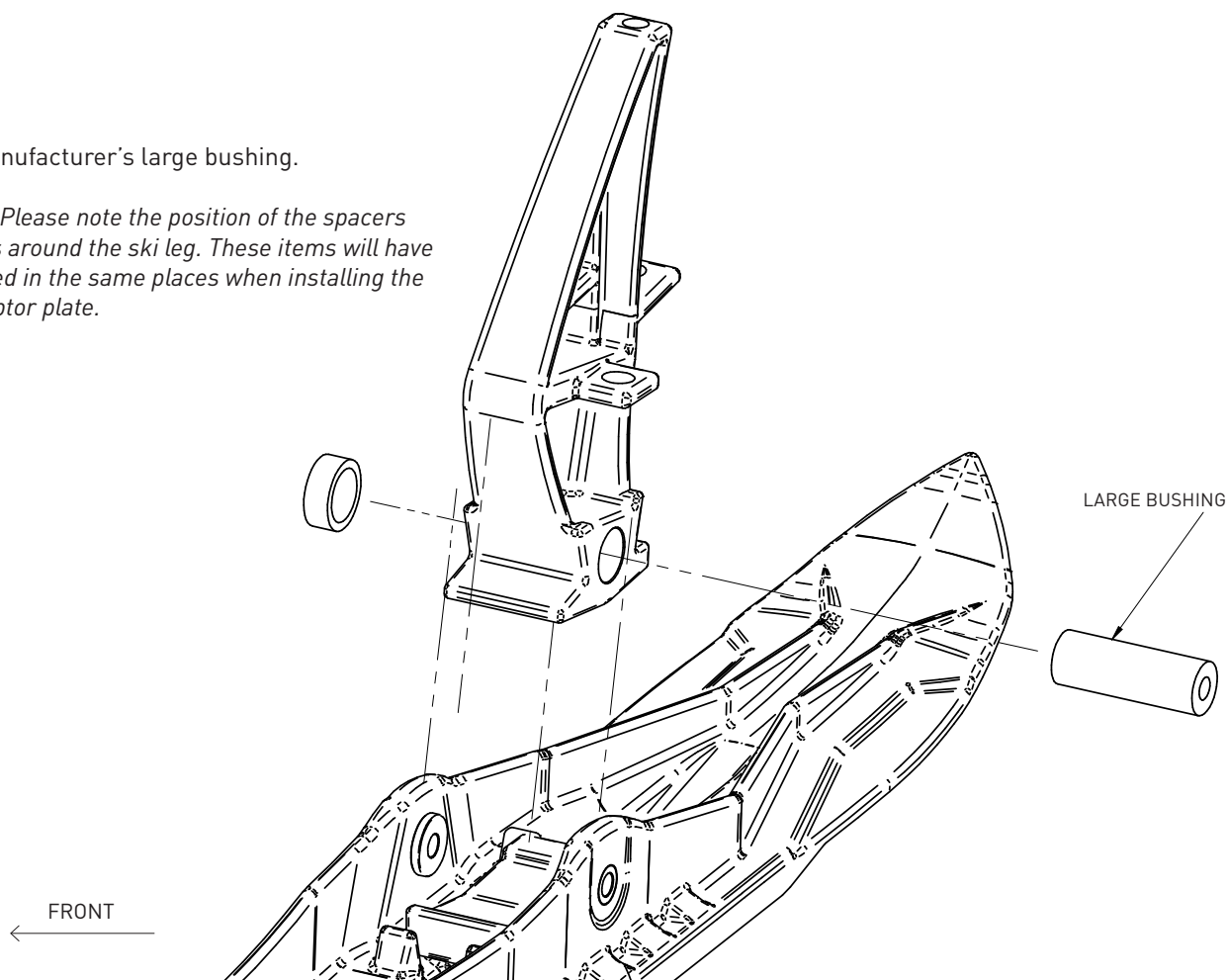
STEP - PREPARE THE SKI

5. Position the adaptor plate **on the inside** of the ski. **The bottom of the adaptor plate must be parallel to the ski base.** Use the countersunk hole as a guide and a 1/4" drill bit to drill a hole through the ski's first edge. Remove the adaptor plate.



6. Remove the manufacturer's large bushing.

⚠ IMPORTANT: Please note the position of the spacers and components around the ski leg. These items will have to be repositioned in the same places when installing the Rouski EVO adaptor plate.



INSTALLATION INSTRUCTIONS - 472208

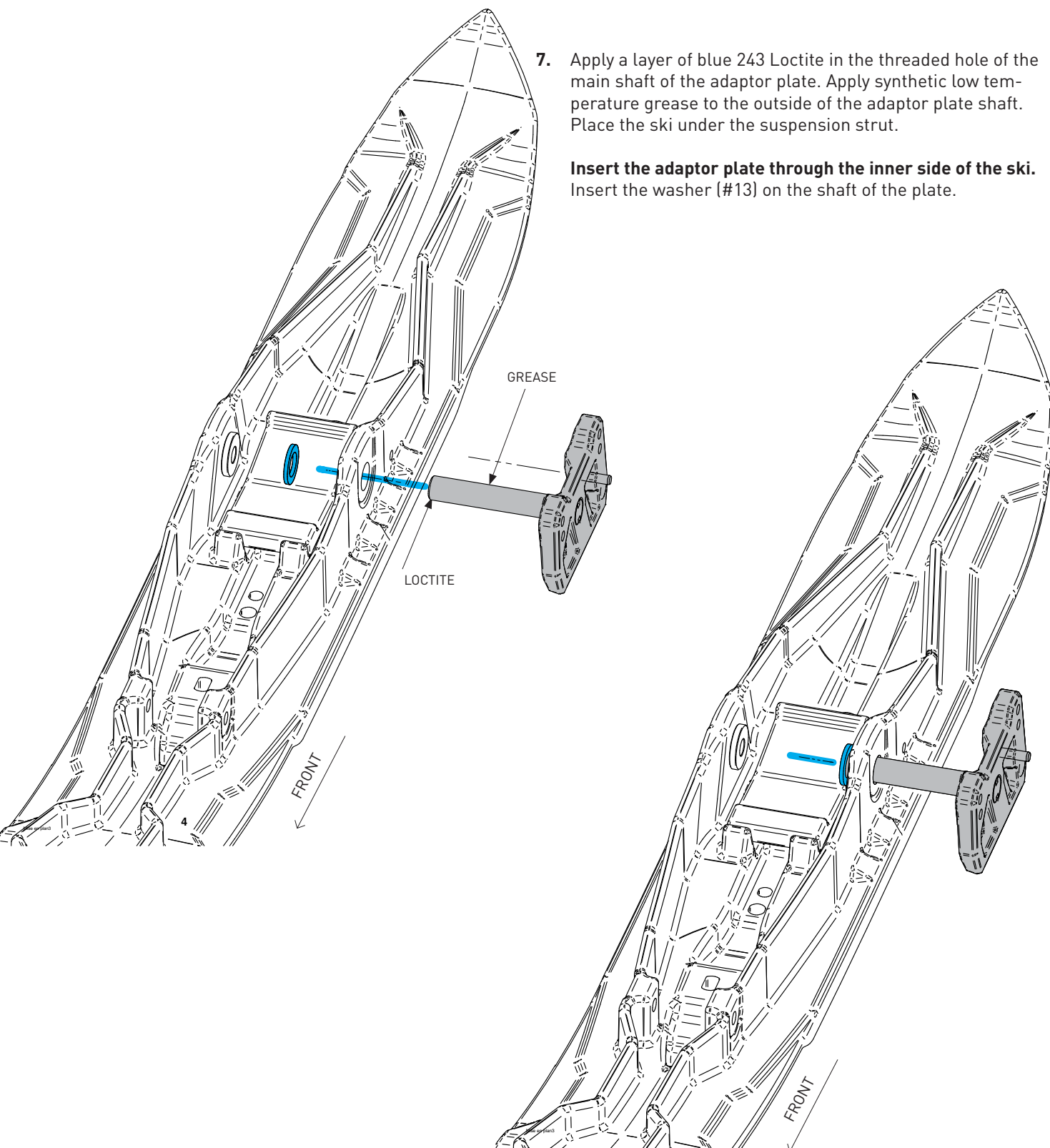
ROUSKI EVO ADAPTER PLATE FOR PILOT 5.7 SKIS

KIMPEX

STEP - INSTALL ADAPTOR PLATE

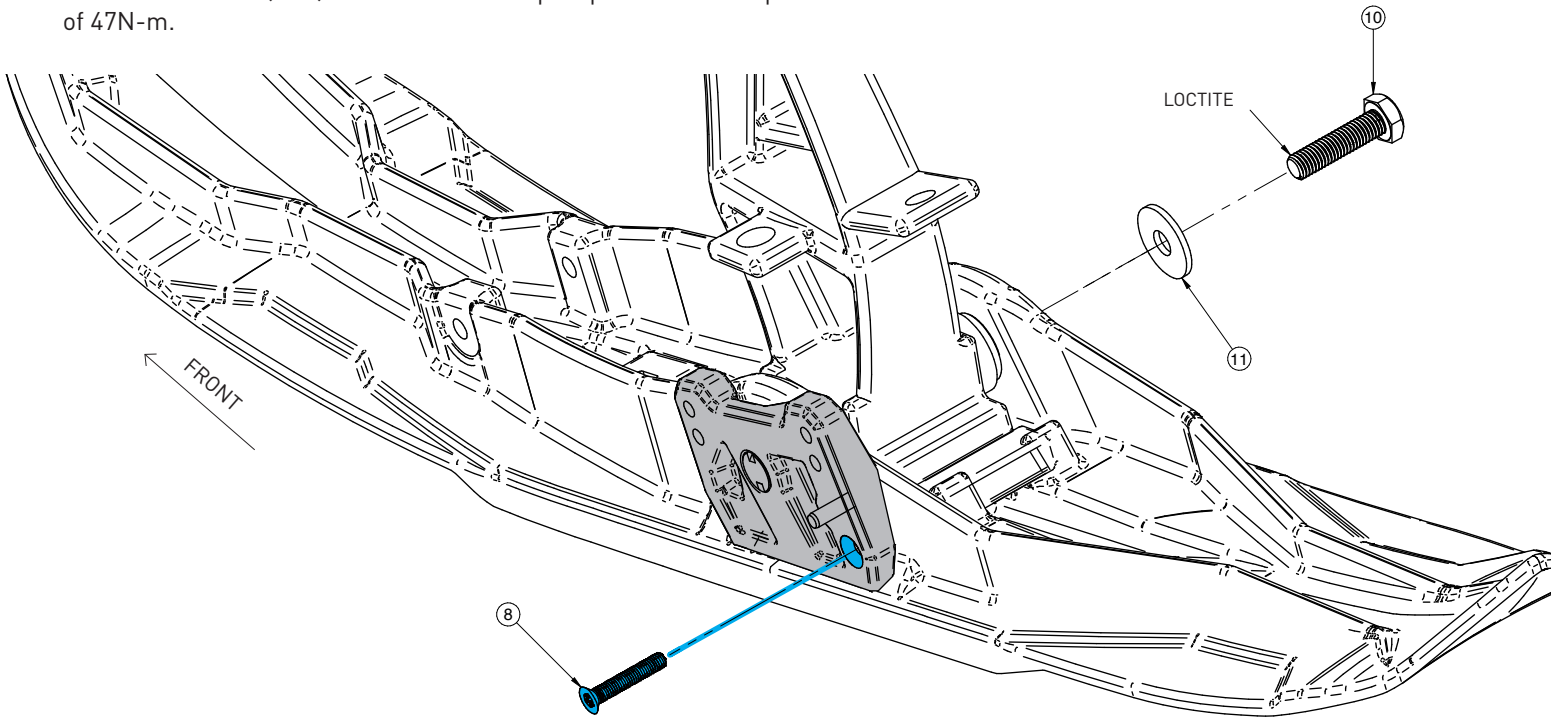
7. Apply a layer of blue 243 Loctite in the threaded hole of the main shaft of the adaptor plate. Apply synthetic low temperature grease to the outside of the adaptor plate shaft. Place the ski under the suspension strut.

Insert the adaptor plate through the inner side of the ski.
Insert the washer (#13) on the shaft of the plate.

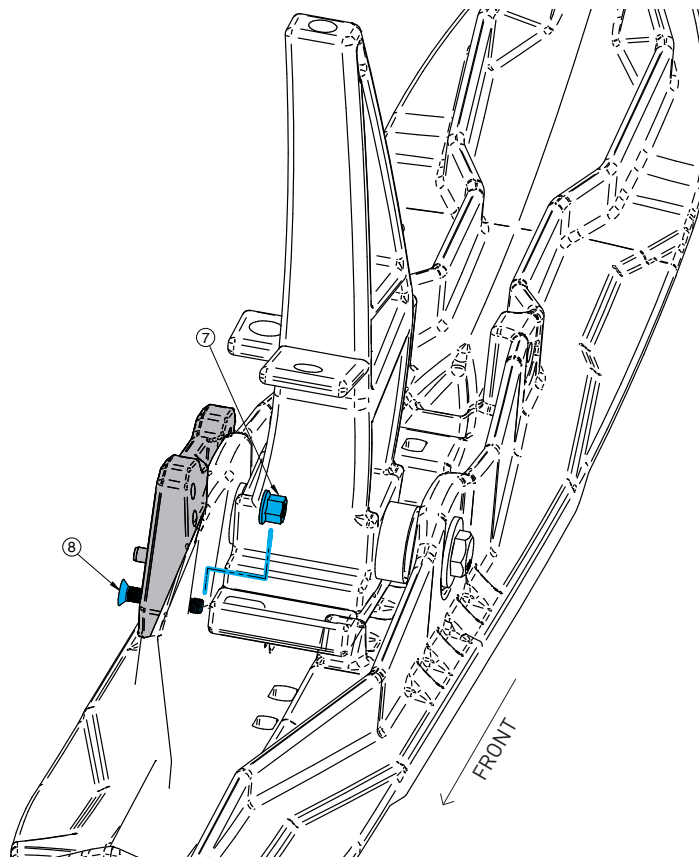


STEP – INSTALL ADAPTOR PLATE

8. Place the M6 bolt (#8) through the adaptor plate and the ski. Apply a layer of blue 243 Loctite on the thread of M10 hex head (#10), insert the washer (#11) and attach the adaptor plate with a torque of 47N-m.



9. Screw the nut (#7) on the bolt (#8), applying a torque of 8N-m.



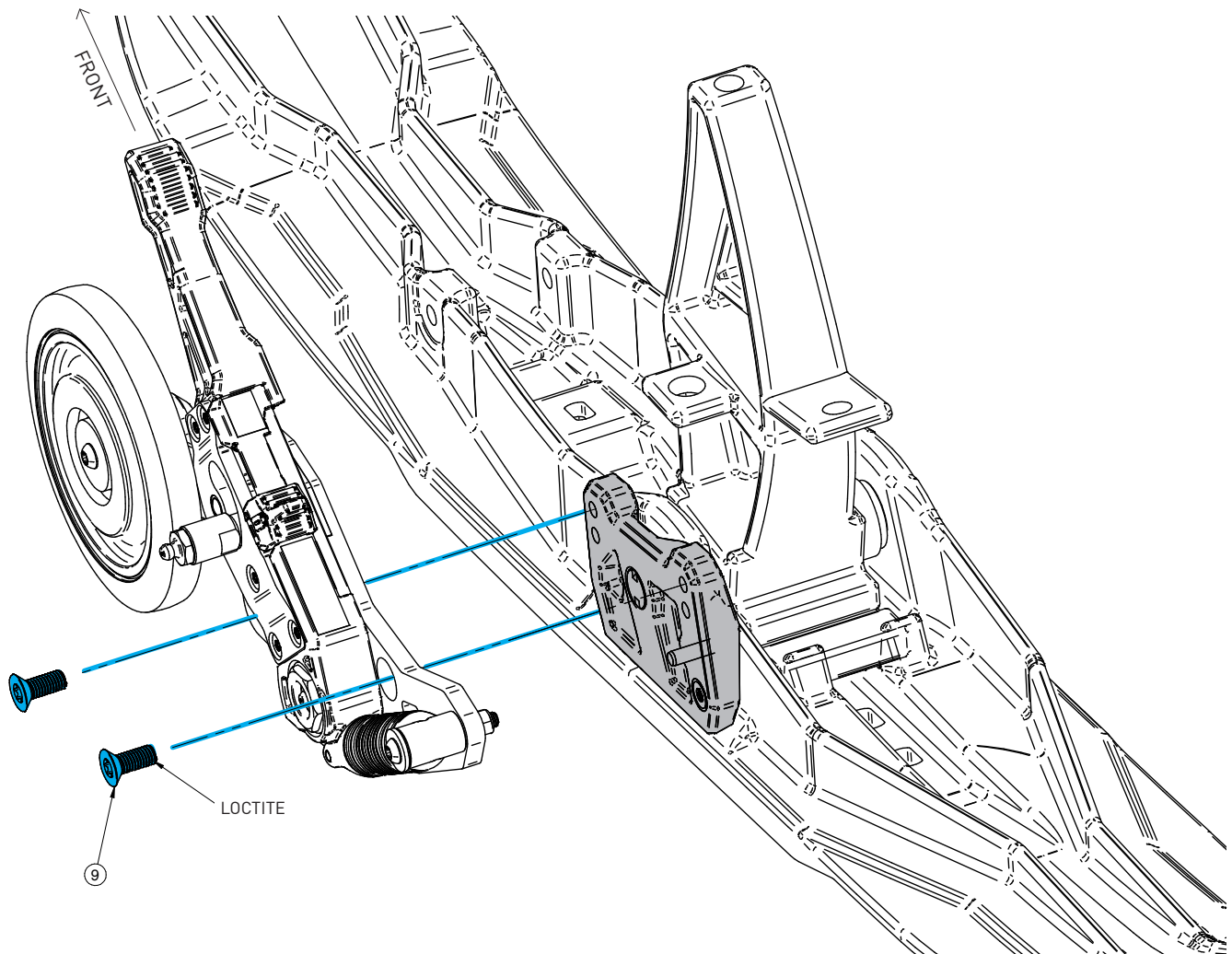
INSTALLATION INSTRUCTIONS - 472208

ROUSKI EVO ADAPTER PLATE FOR PILOT 5.7 SKIS



STEP - INSTALL ADAPTOR PLATE

10. Apply a layer of blue 243 Loctite on the thread of the two bolts (#9), then mount the Rouski EVO onto the adaptor plate with a torque of 24N-m. The top position is for original runners. the bottom position is for more aggressive runners*.
11. Repeat the same operations for the other ski.



*THE ROUSKI EVO HAS 2 MOUNTING HEIGHTS.

The top position is recommended for runners with a profile height lower than 3/4" (19 mm).

The bottom position is recommended for runners with a profile height of at least 3/4" (19 mm).

IMPORTANT: A wrong height selection could result in an unwanted deactivation of the Rouski or reduce the operating performance of the Rouski EVO.

